

# SQ Fire range

## SQ Fire L & SQ Fire XL

Training and competition  
targets for ISSF disciplines

**Product sheet**

SQ Fire L  
SQ Fire XL  
V.2.0.0

# SQ Fire L and XL for rimfire disciplines

- The **SQ Fire L and SQ Fire XL** targets are the result of a technological development\* that allows for accuracy of better than half a tenth of a point across the whole face of the target.
  - **SQ Fire L** is designed for rimfire disciplines (22 LR) at 50m, 25yds and 20 yds for training, leisure or competition and can be supplied with the appropriate mask on request.
  - **SQ Fire XL** is designed for use at 25m and 50m and also 100m/ yds. This target is also for 22 LR calibre disciplines.
- For both targets, the SQ Touch control tablet (weighted tablet on articulated stand) enables you to select a discipline from the menu, organize a training or competition session and instantly view results in real time. The targets are equipped with an integrated system for the recovery and containment of lead bullets and dust, which are contained in an easily accessible, reinforced drawer.

\* SPORT QUANTUM and CEA LIST (Laboratory for Integration of Systems and Technology) have filed several international patents.

## SQ Fire L & SQ Fire XL

Intuitive software and real-time display for improved concentration and performance



# SQ Fire Features



## The SQ Touch tablet

- Displays results directly on the screen
- Controls the application and allows each training session to be personalized
- Provides an immediate view of shooter progress

## Card variants

- SQ Fire L
  - ISSF 50m, NSRA 20yd, 25 yd
- SQ Fire XL
  - ISSF 25 Rapid Fire
  - Card ISSF 25/50 Pistol (C50)
  - ISSF 50m rifle

## Choice of activities

- The software includes training and competition modules based on ISSF criteria and regulations.
- Compatible with **SynQro**, our training supervision and competition management software
- Customizable application in English, French, German, Russian, Italian, Spanish, Norwegian, Czech

## Precision

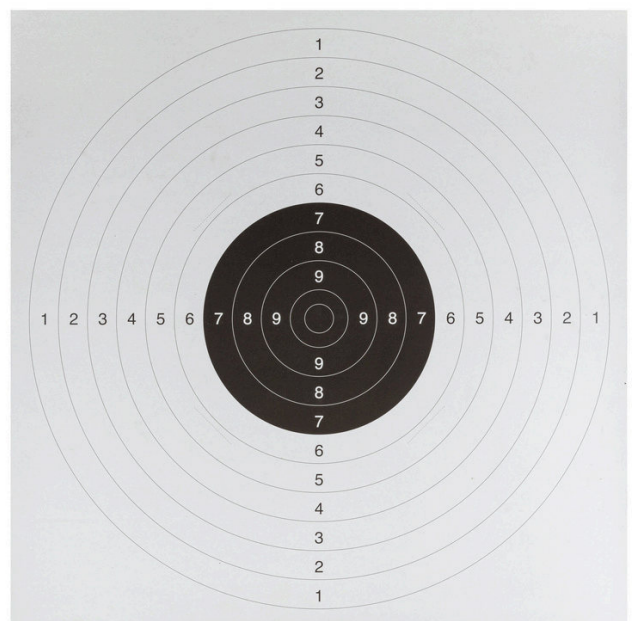
- Measurement accuracy in accordance with ISSF Disciplines

## Score analysis

- Real-time display of scores (decimal or integer)
- Display of number of X's
- Display of series and facility to check scores
- Measurement of shot timing (total duration and time between shots)
- Calculation and display of grouping and dispersion
- Shot correction indications

## Measuring progress

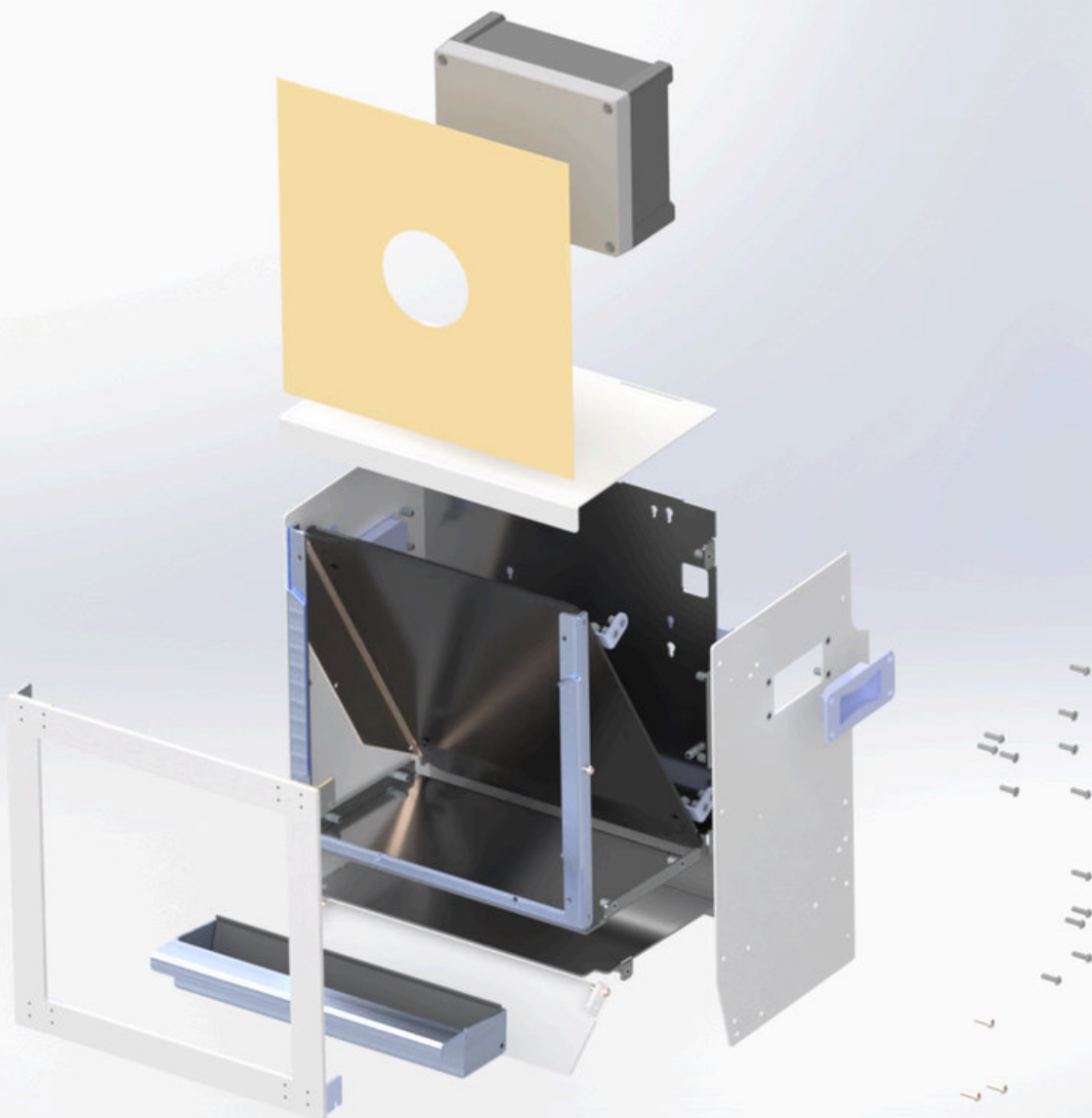
- As with all Sport Quantum targets, a QR code can be generated for each session, providing individualized statistics and enabling results to be saved or printed in .pdf and/or .csv format.



SQ FIRE TARGETS ARE APPROVED BY THE FFTIR FOR 50M DISCIPLINES

# Precise, original technology

- Shooting accuracy to the nearest half-10th of a pointResults displayed in
- real time on the monitor
- Armoured steel impact plate for .22LR 40gr SN projectiles
- Modular chassis design simplifies maintenance, as each part can be replaced independently if required
- Facility to connect a stand-alone battery in ranges without a power supply at the firing point
- Removable electronics unit means that only an inert target remains on site, and maintenance can be carried out without moving the chassis
- Integrated bullet catcher with dust and particle containment



# SQ Fire L and SQ Fire XL Specifications

## Shooting distance

- **SQ FIRE L** 50m, 25yds, 20 yds
- **SQ FIRE XL** 25m, 50m and 100m/yds

## Bullet recovery

- Armoured drawer for bullet and lead particle recovery
- Lead dust containment

## Weatherproof consumables

Target Masks for pistol and rifle

## Calibre

- SQ FIRE L 22 LR
- SQ FIRE XL 22 LR

## Rugged

- Robust target, armoured steel measuring plate

## Operating conditions

- Operating temperature: 5°C to 50°C
- Storage temperature: -5°C to 50°C\*

## Connection between target and control tablet

- Ethernet connection to SQ Touch tablet for immediate, undisturbed performance display

\* If not used during winter, we recommend storing the electronics (housed in a removable box) in a dry place, inside a building.

## Installing SQ Fire and SQ Fire XL targets

- 30-watt power supply via PoE (Power on Ethernet)
- SQ FIRE L 500mm x 395mm x 252mm - 22kg
- SQ Fire XL 610mm x 650mm x 370mm - 65kg
- Target mounting: bracket supplied for flat wall  
Integrated shooting box holding system

## Installing the SQ Touch control panel (Android)

- Power supply via PoE (Power on Ethernet)
- 10" weighted shelf on articulated stand
- 255mm x 170mm x 85mm - 2.1kg
- Software installed, application configured and paired with its target

## Warranty

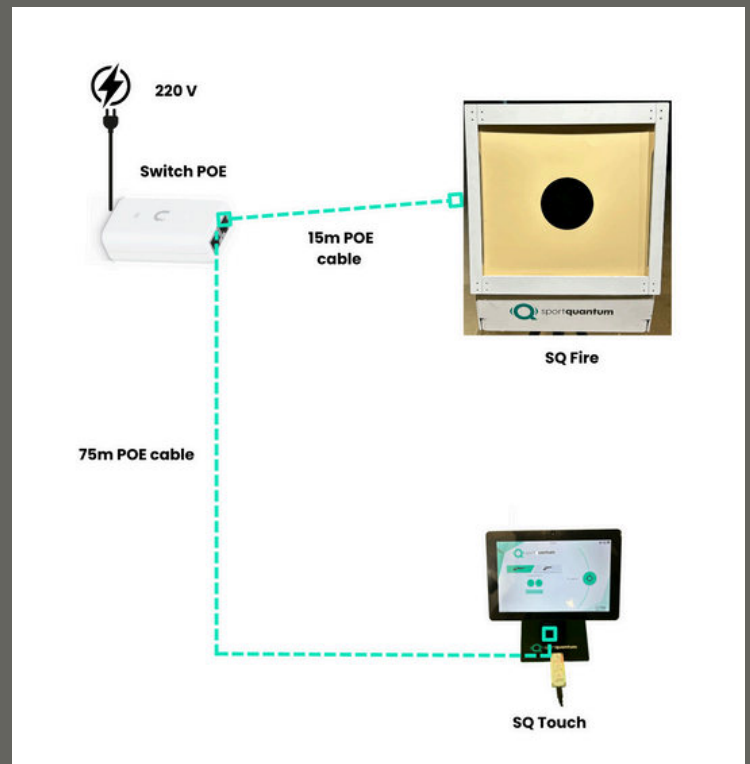
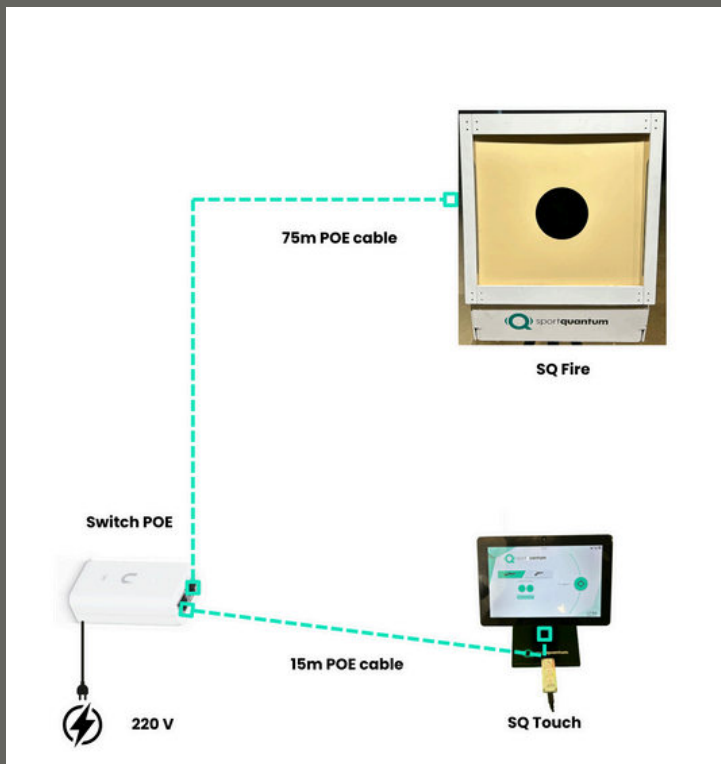
- 2 years (electronic parts and measuring plate)



# SQ Fire L & SQ Fire XL

## Material supplied with targets

- Weighted SQ Touch tablet on swivel stand
- Software installed and configured (target and tablet)
- Waterproof PoE switch (power supply)
- 75m RJ45 cable (IP standard)
- 10m RJ45 cable (IP standard)
- **SQ Fire L** supplied with appropriate 22LR masks (rubberized, non-tear, water-resistant)
- **SQ Fire XL** delivered with appropriate .22LR masks; (non-tearable, water-resistant)
- SQ Fire L wall-mounting bracket
- 



Other electrical configurations are possible on request, depending on the number of targets to be connected (network configuration studies, supervision requirements, etc.).

**“ Ready to shoot ”**  
Targets set up and ready to use



## SQ Fire L and SQ Fire XL Options

- Target support frame
- 3-position rifle discipline remote control
- Power Box (external battery): 2hrs 30mins autonomy for one target
- Kit Rapid Fire: Red and Green lights for RF disciplines (SQ Fire XL only)
- SynQro: supervision system for ISSF training and competitions, etc.
- TV-Projector box: the SynQro supervisor allows results to be displayed on a public screen (Ethernet or Wi-Fi). Results can be displayed either as target visual or list mode.

